

Engine	Shangchai SC8D170G2B1
Gross Power	125 kW (170 hp) @ 2,200 rpm
Net Power	112.5 kW (153 hp) @ 2,200 rpm
Operating Weight	13,800 kg
Standard Bucket Size	2.2 m ³
Standard Breakout Force	110 kN
Standard Dump Clearance	2,800 mm

ZL40B WHEEL LOADER



TOUGH WORLD. TOUGH EQUIPMENT.

ZL40B SPECIFICATIONS >>>

ENGINE

Emission Regulation	Tier 2 / Stage II
Make	Shangchai
Model	SC8D170G2B1
Gross Power	125 kW (170 hp) @ 2,200 rpm
Net Power	112.5 kW (153 hp) @ 2,200 rpm
Peak Torque	650 N · m
Displacement	8.27 L
Number of Cylinders	6
Aspiration	Turbocharged

TRANSMISSION

Transmission Type	Planetary type, power shift
Torque Converter	Double stage, four elements
Maximum Travel Speed, fwd	35 km/h
Maximum Travel Speed, rev	14 km/h
Number of Speeds, fwd	2
Number of Speeds, rev	1

AXLES

Differential Front Type	Conventional
Differential Rear Type	Conventional
Axle Oscillation	±11°

STEERING

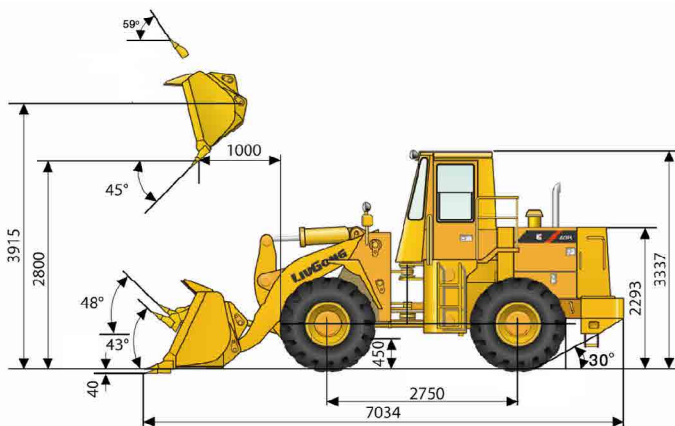
Steering Configuration	Articulated
Steering Relief Pressure	12 Mpa

BRAKES

Service Brake Type	Caliper dry disc
Service Brake Actuation	Air over hydraulic
Parking Brake Type	Manual pneumatic control
Parking Brake Actuation	Air

HYDRAULIC SYSTEM

Main Pump Type	Gear
Main Relief Pressure	16 MPa
Raise	6.5s
Dump Time	1.6 s
Float Down Time	3.5 s
Fastest Total Cycle Time	11.6 s



LOADER ARM PERFORMANCE

Tipping Load - Straight	9,490 kg
Tipping Load - Full Turn	8,239 kg
Bucket Breakout Force	110 kN
Maximum Dump Angle at Full Height	45°
Dump Clearance at Full Height Discharge	2,800 mm
Dump Reach at Full Height Discharge	1,000 mm
Maximum Hinge Pin Height	3,915 mm
Maximum Digging Depth, Bucket Level	40 mm
Bucket Rollback at Ground Level	43°
Bucket Rollback at Carry	48°
Bucket Rollback at Maximum Height	59°

BUCKET PERFORMANCE

Reference Bucket	2.2 m ³
------------------	--------------------

DIMENSIONS

Length with Bucket Down	7,034 mm
Width Over Tires	2,470 mm
Wheelbase	2,750 mm
Wheel Tread	1,950 mm
Ground Clearance	450 mm
Turn Angle, Either Side	35°
Rear Angle of Departure	30°
Turning Radius, Outside of Tire	5,446 mm
Turning Radius, Center of Tire	5,186 mm
Turning Radius, Bucket Carry	6,630 mm

TIRES

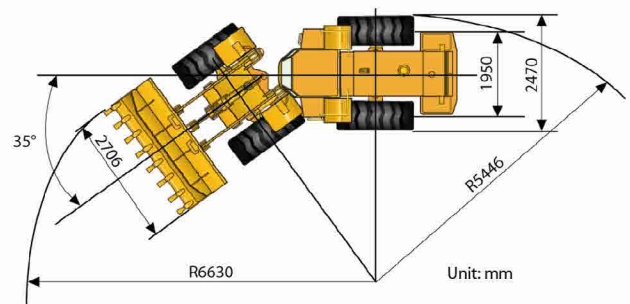
Tire Size	20.5 - 25
-----------	-----------

OPERATING WEIGHTS

Operating Weight	13,800 kg
------------------	-----------

SERVICE CAPACITY

Fuel Tank	200 L
Engine Oil	22 L
Cooling System	35 L
Hydraulic Reservoir	200 L
Transmission and Torque Converter	45 L
Axles, each	22 L



Guangxi Liugong Machinery Co., Ltd.

No. 1 Liutai Road, Liuzhou, Guangxi 545007, PR China
T: +86 772 3886124 E: overseas@liugong.com
www.liugong.com

Specifications and designs are subject to change without notice. Machines shown may include optional equipment.

05/2014 Designed by LiuGong