

Engine	Shangchai SC8D170G2B1
Gross Power	125 kW (170 hp) @ 2,200 rpm
Net Power	112.5 kW (153 hp) @ 2,200 rpm
Operating Weight	13,800 kg
Standard Bucket Size	2.3 m ³
Standard Breakout Force	125 kN
Standard Dump Clearance	2,880 mm

842 WHEEL LOADER



TOUGH WORLD. TOUGH EQUIPMENT.

842 SPECIFICATIONS >>>

ENGINE

Emission Regulation	Tier 2 / Stage II
Make	Shangchai
Model	SC8D170G2B1
Gross Power	125 kW (170 hp) @ 2,200 rpm
Net Power	112.5 kW (153 hp) @ 2,200 rpm
Peak Torque	650 N · m
Displacement	8.27 L
Number of Cylinders	6
Aspiration	Turbocharged

TRANSMISSION

Transmission Type	Planetary type, power shift
Torque Converter	Double stage, four elements
Maximum Travel Speed, fwd	36 km/h
Maximum Travel Speed, rev	13 km/h
Number of Speeds, fwd	2
Number of Speeds, rev	1

AXLES

Differential Front Type	Conventional
Differential Rear Type	Conventional
Axle Oscillation	±12°

STEERING

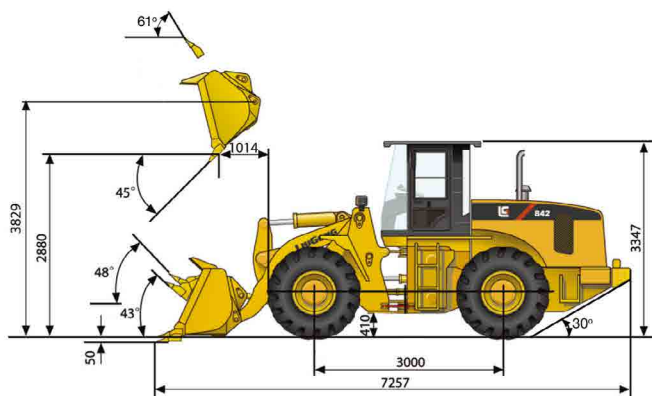
Steering Configuration	Articulated
Steering Relief Pressure	15 Mpa

BRAKES

Service Brake Type	Caliper disc brake
Service Brake Actuation	Air over hydraulic
Parking Brake Type	Manual pneumatic control
Parking Brake Actuation	Air

HYDRAULIC SYSTEM

Main Pump Type	Gear
Main Relief Pressure	18 MPa
Raise	5.5 s
Dump Time	1.2 s
Float Down Time	3.7 s
Fastest Total Cycle Time	10.4 s



LOADER ARM PERFORMANCE

Tipping Load - Straight	9,969 kg
Tipping Load - Full Turn	8,633 kg
Bucket Breakout Force	125 kN
Maximum Dump Angle at Full Height	45°
Dump Clearance at Full Height Discharge	2,880 mm
Dump Reach at Full Height Discharge	1,014 mm
Maximum Hinge Pin Height	3,829 mm
Maximum Digging Depth, Bucket Level	50 mm
Bucket Rollback at Ground Level	43°
Bucket Rollback at Carry	48°
Bucket Rollback at Maximum Height	61°

BUCKET PERFORMANCE

Reference Bucket	2.3 m ³
------------------	--------------------

DIMENSIONS

Length with Bucket Down	7,257 mm
Width Over Tires	2,470 mm
Wheelbase	3,000 mm
Wheel Tread	1,950 mm
Ground Clearance	410 mm
Turn Angle, Either Side	38°
Rear Angle of Departure	30°
Turning Radius, Outside of Tire	5,591 mm
Turning Radius, Center of Tire	5,331 mm
Turning Radius, Bucket Carry	6,406 mm

TIRES

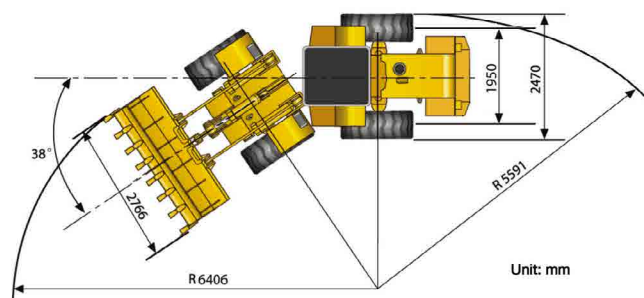
Tire Size	20.5 - 25
-----------	-----------

OPERATING WEIGHTS

Operating Weight	13,800 kg
------------------	-----------

SERVICE CAPACITY

Fuel Tank	210 L
Engine Oil	22 L
Cooling System	38 L
Hydraulic Reservoir	170 L
Transmission and Torque Converter	45 L
Axle, Front	28 L
Axle, Rear	32 L



Guangxi Liugong Machinery Co., Ltd.

No. 1 Liutai Road, Liuzhou, Guangxi 545007, PR China
 T: +86 772 3886124 E: overseas@liugong.com
 www.liugong.com

Specifications and designs are subject to change without notice. Machines shown may include optional equipment.

05/2014 Designed by LiuGong